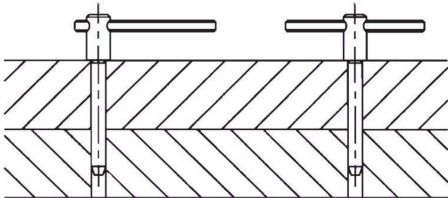
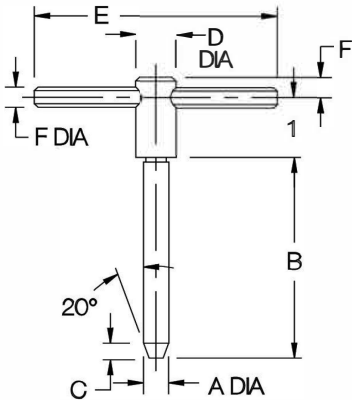


JIG PINS

PIN: 1144 STEEL, HEAT TREATED, BLACK OXIDE FINISH
HANDLE: SPRING STEEL, BLACK OXIDE FINISH



Similar to L and T Pins, but with a shoulder to keep the handle raised. Pins are ground slightly undersized. To convert from an L handle to a T handle, slide the roll-pin handle by tapping it with a hammer.



INCH

PART NO.	A DIA		B	C	D DIA	E	F
	NOMINAL	ACTUAL +0/-0.0005					
CL-10-JP	3/16	.1872	1-7/8	1/8	3/8	2	3/16
CL-20-JP	1/4	.2497	2	5/32			
CL-30-JP	5/16	.3120	2-1/2	3/16	1/2	3	1/4
CL-40-JP	3/8	.3745	3-1/4	1/4			
CL-50-JP	1/2	.4995	4	9/32	9/16	3	1/4

METRIC

PART NO.	A DIA (mm)		B (mm)	C (mm)	D DIA (mm)	E (mm)	F (mm)
	NOMINAL	ACTUAL +0/-0.013					
CLM-6-JP	6	5.992	51	3.9	9.5	51	4.8
CLM-8-JP	8	7.988	63.5	4.8	12.5	76	6.5
CLM-10-JP	10	9.987	82.5	6.5	12.5	76	6.5
CLM-12-JP	12	11.986	101.5	7	14	76	6.5

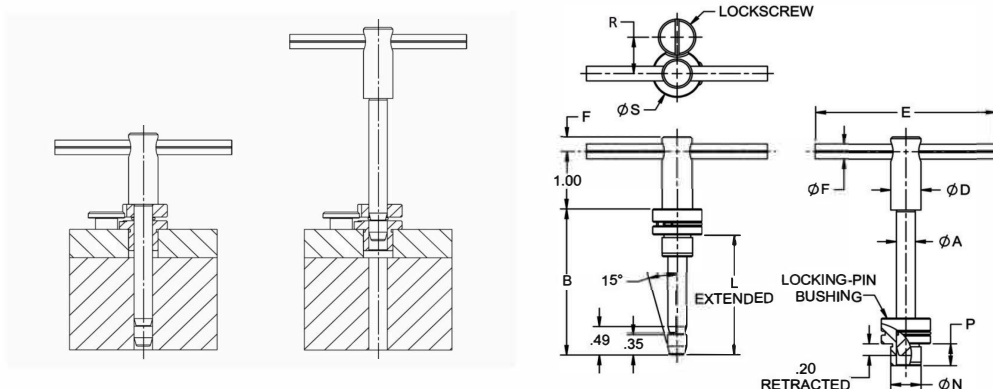
CAPTIVE JIG PINS

PIN: 1215 STEEL, HEAT TREATED, BLACK OXIDE FINISH
HANDLE: SPRING STEEL, BLACK OXIDE FINISH
BUSHING: 1144 STEEL, CASE HARDENED, BLACK OXIDE FINISH



Similar to a standard Jig Pin, except that the pin body is positively retained in a locking bushing. In fully retracted position, the bushing's spring clip snaps into the pin's groove. This holds the pin fully retracted by spring force and positively prevents removal. Spring pressure also holds the pin in intermediate extended positions, an advantage especially if the fixture is turned upside down. Like standard Jig Pins, Captive Jig pins have an integral shoulder to keep the handle raised. Available in pin diameters from 3/16 to 1/2". Made in USA.

Locking-Pin Bushings are designed to press fit in a standard reamed hole. Secure with the included Lockscrew to positively hold the bushing in place. Shorter or longer bushings are available in most sizes, for thinner or thicker plates.



COMPLETE ASSEMBLY (INCH)

PART NO.	A DIA		B PIN LENGTH	P BUSHING LENGTH UNDER HEAD	D DIA	E	F	G	H	J	L	M	N DIA		R +.03/- .01	S DIA	JIG PIN (INCLUDED)	BUSHING (INCLUDED)	LOCKSCREW (INCLUDED)	
	NOMINAL	ACTUAL +.0000/- .0005											NOMINAL	ACTUAL +.0000/- .0003						
CL-1-CJPA	3/16	.1865	1-7/8	Standard	.31	3/8	2	3/16	.49	1	.35	1.40	.20	13/32	.4078	.62	13/16	CL-1-CJP	CL-3-LPB	LS-1
CL-2-CJPA	1/4	.2490	2	Standard	.31	3/8	2	3/16	.49	1	.35	1.60	.20	13/32	.4078	.62	13/16	CL-2-CJP	CL-4-LPB	LS-1
CL-21-CJPA				Long	.50														CL-4A-LPB	
CL-31-CJPA				Standard	.31														CL-5-LPB	
CL-3-CJPA				Medium	.37														CL-5A-LPB	
CL-33-CJPA	5/16	.3115	2-1/2	Long	.50	1/2	3	1/4	.49	1	.35	2.10	.20	1/2	.5017	.62	13/16	CL-3-CJP	CL-5B-LPB	LS-1
CL-41-CJPA				Standard	.31														CL-6-LPB	
CL-4-CJPA	3/8	.3740	3-1/4	Long	.50	1/2	3	1/4	.49	1	.35	2.80	.20	5/8	.6267	.62	13/16	CL-4-CJP	CL-6A-LPB	LS-1
CL-51-CJPA				Standard	.50														CL-8-LPB	
CL-5-CJPA	1/2	.4990	4	Long	.75	9/16	3	1/4	.49	1	.35	3.60	.20	3/4	.7518	.75	1-1/16	CL-5-CJP	CL-8A-LPB	LS-1